



ELECTRONIC COPY

LABORATORY GROWN DIAMOND REPORT

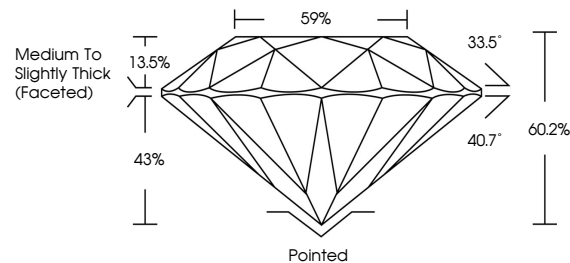
October 18, 2022
 IGI Report Number **LG549211014**
 Description **LABORATORY GROWN
DIAMOND**
 Shape and Cutting Style **ROUND BRILLIANT**
 Measurements **8.58 - 8.63 X 5.18 MM**
GRADING RESULTS
 Carat Weight **2.34 CARATS**
 Color Grade **E**
 Clarity Grade **SI 1**
 Cut Grade **IDEAL**

ADDITIONAL GRADING INFORMATION

Polish **EXCELLENT**
 Symmetry **EXCELLENT**
 Fluorescence **NONE**
 Inscription(s) **LABGROWN IGI LG549211014**

Comments: HEARTS & ARROWS
 This Laboratory Grown Diamond was created by
 Chemical Vapor Deposition (CVD) growth process and
 may include post-growth treatment.
 Type IIa

PROPORTIONS



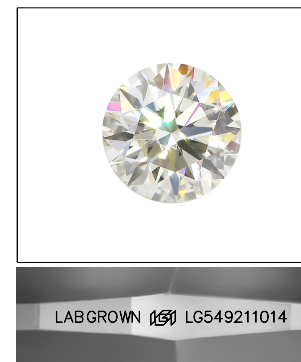
GRADING SCALES

CLARITY

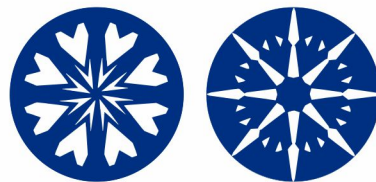
IF	VVS ¹⁻²	VS ¹⁻²	SI ¹⁻²	I ¹⁻³
Internally Flawless	Very Very Slightly Included	Very Slightly Included	Slightly Included	Included

COLOR

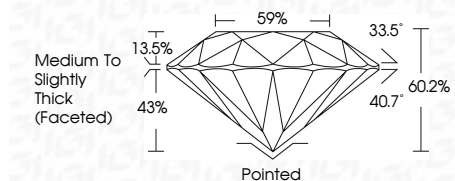
D	E	F	G	H	I	J	Faint	Very Light	Light
---	---	---	---	---	---	---	-------	------------	-------



LASERSCRIBESM
Sample Image Used



October 18, 2022
 IGI Report Number **LG549211014**
 Description **LABORATORY GROWN
DIAMOND**
 Shape and Cutting Style **ROUND BRILLIANT**
 Measurements **8.58 - 8.63 X 5.18 MM**
GRADING RESULTS
 Carat Weight **2.34 CARATS**
 Color Grade **E**
 Clarity Grade **SI 1**
 Cut Grade **IDEAL**



ADDITIONAL GRADING INFORMATION

Polish **EXCELLENT**
 Symmetry **EXCELLENT**
 Fluorescence **NONE**
 Inscription(s) **LABGROWN IGI LG549211014**

Comments: HEARTS & ARROWS
 This Laboratory Grown Diamond was created by
 Chemical Vapor Deposition (CVD) growth process and
 may include post-growth treatment.
 Type IIa



October 18, 2022	IGI Report No LG549211014	2.34 CARATS	E	SI 1	Pointed	EXCELLENT	EXCELLENT	NONE	LABGROWN IGI LG549211014
ROUND BRILLIANT	8.58 - 8.63 X 5.18 MM	Color Grade	IDEAL	60.2%	59%	Medium To Slightly Thick (Faceted)	Polish	EXCELLENT	Comments: HEARTS & ARROWS This Laboratory Grown Diamond was created by Chemical Vapor Deposition (CVD) growth process and may include post-growth treatment. Type IIa
Carat Weight	2.34 CARATS	Clarity Grade	SI 1	60.2%	59%	Culet	Symmetry	EXCELLENT	
Color Grade	E	Cut Grade	IDEAL	60.2%	59%	Fluorescence	Inscription(s)	NONE	
Clarity Grade	SI 1	Table	60.2%	59%	Grade				
Cut Grade	IDEAL	Grade	Medium To Slightly Thick (Faceted)						